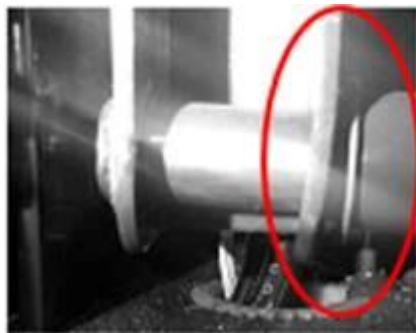
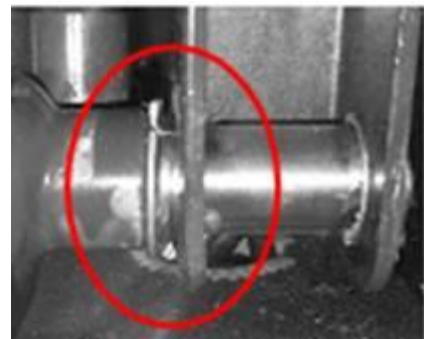


R15YI Recall Submission Instructions

- Recall submission:
 - Go to link: http://www.riconcorp.com/recall_knuckle_15e-068.asp
 - Type in your Serial Numbers in the serial number field (you can enter multiple serial numbers) and submit
 - Print out 15E-068 inspection Log
 - Inspect units. See description of damages on Recall notification. See pictures below for examples:



Bent Link Arm



DU Bearing

- Document inspection results on log:
 - Damaged- need replacement
 - Provide Ship to Address for replacement parts on log
 - No damage- no replacement needed
 - Monitor Link Arm assembly regularly
- Submit completed inspection log to Ricon via:
 - Fax: 800-962-1201
 - Email: admin15e068@wabtec.com
- Ricon will review the submission and will send out replacement parts and/or mark your units as completed for NHTSA reporting.