

**BLUE BIRD**

July 29, 2014

**To:** Affected North American Dealers

**Subject:** Service Bulletin S14XG 8D Battery Cables Routing

**Models Affected:** 2010 through 2015 Model Year All American Front and Rear Engine Models Equipped with Optional 8 D Batteries

**Bulletin Duration:** One (1) Year from In-Service Date

#### **Overview**

On buses with Feature 40142-04 8 D batteries, the positive battery cable may come in contact with the battery compartment door reinforcement when door is closed. Service Bulletin S14XG provides instructions for inspecting and, if needed, for rerouting the battery cables to prevent contact with the compartment door reinforcement.

#### **Affected Units**

A printout is attached of the buses in your territory that are affected by this bulletin. Service Bulletin S14XG will be mailed to all owners on record.

#### **Time Allowance**

Time allowed to inspect the positive cable for contact with compartment door reinforcement is 0.1 hours per bus.

Time allowed for inspecting the positive battery cable for contact with compartment door reinforcement and rerouting the battery cables is 0.3 hours per bus.

#### **Repair Parts**

Replacement positive battery cables must be ordered directly through Blue Bird Service Parts. Parts are available to be ordered.

#### **Labor Reimbursement**

Warranty applications for labor reimbursement may be submitted to Blue Bird iWarranty (Campaigns/Claims).

#### **Bulletin Duration**

This Service Bulletin ends one (1) year from the in-service date of the affected buses.

**BLUE BIRD BODY COMPANY**

P.O. Box 937 – 402 Blue Bird Blvd – Fort Valley, Georgia – (478) 825-2021



**BLUE BIRD**

**Repair Facility**

Owners are being advised to contact their dealer for assistance, if needed.

**Questions**

Questions regarding this bulletin should be directed to your Blue Bird Field Service Representative.

Sincerely,

Bill Coleman  
Engineering Services  
478-822-2242

**BLUE BIRD BODY COMPANY**

P.O. Box 937 – 402 Blue Bird Blvd – Fort Valley, Georgia – (478) 825-2021



July 29, 2014

**To:** Select Blue Bird Customers

**Subject:** Service Bulletin S14XG 8D Battery Cables Routing

**Models Affected:** 2010 through 2015 Model Year All American Front and Rear Engine Models Equipped with Optional 8 D Batteries

**Bulletin Duration:** One (1) Year from In-Service Date

**Overview**

On buses with Feature 40142-04 8 D batteries, the positive battery cable may come in contact with the battery compartment door reinforcement when door is closed. Service Bulletin S14XG provides instructions for inspecting and, if needed, for rerouting the battery cables to prevent contact with the compartment door reinforcement.

**Affected Units**

The buses in your fleet that are affected by this bulletin are identified by Blue Bird body serial number(s) on the enclosed cover sheet.

**Time Allowance**

Time allowed to inspect the positive cable for contact with compartment door reinforcement is 0.1 hours per bus.

Time allowed for inspecting the positive battery cable for contact with compartment door reinforcement and rerouting the battery cables is 0.3 hours per bus.

**Repair Parts**

If needed, replacement positive battery cables must be ordered by your dealer directly through Blue Bird Service Parts. Parts are available to be ordered.

**Labor Reimbursement**

If you perform this service bulletin yourself or have an outside repair facility perform this bulletin you may submit claims for labor and parts reimbursement to your Blue Bird dealer.



**BLUE BIRD**

**Bulletin Duration**

This Service Bulletin ends one (1) year from the in-service date of the subject buses in your fleet.

**Repair Facility**

We encourage you to contact your Blue Bird dealer to arrange to have this Service Bulletin performed. However, you may have the option to perform this Service Bulletin yourself or have a qualified repair facility convenient to you perform this work. A qualified technician must perform work required under this bulletin.

**Questions**

Questions regarding this bulletin should be directed to your Blue Bird Dealer.

Sincerely,

Bill Coleman  
Engineering Services  
478-822-2242

**BLUE BIRD BODY COMPANY**

P.O. Box 937 – 402 Blue Bird Blvd – Fort Valley, Georgia – (478) 825-2021



## Battery Cable May Contact Battery Compartment Door Reinforcement

# BULLETIN

**Models Affected: 2010 to 2015 Model Year All American Front and Rear Engine Models**

### ISSUE

On buses with Feature 40142-04 8 D batteries, the positive battery cable may come in contact with the battery compartment door reinforcement when door is closed.

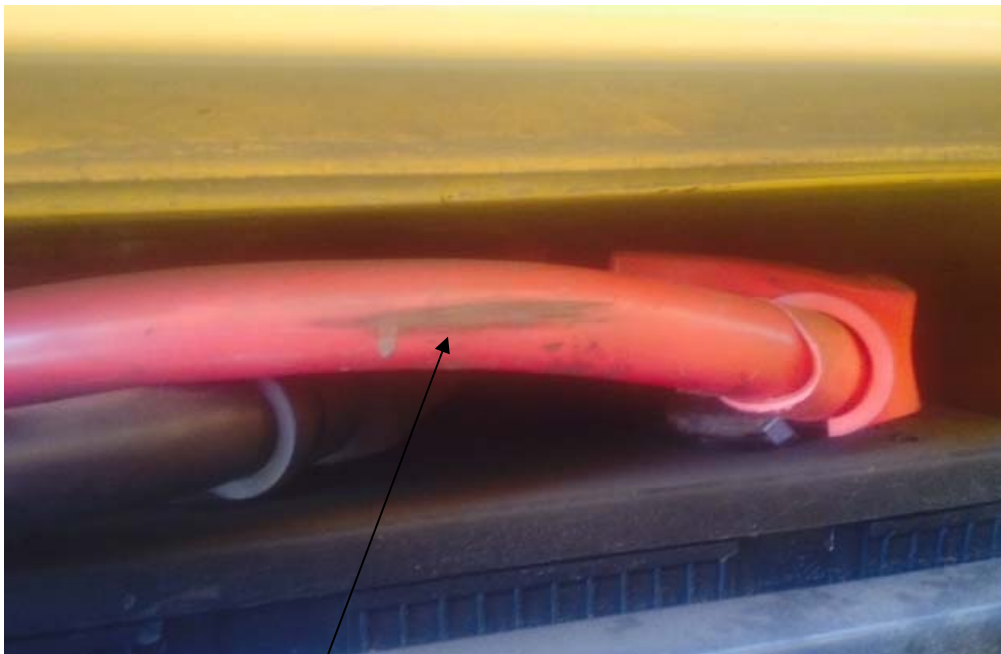
### CORRECTIVE ACTION

Inspect positive cable and, if needed, change routing of battery cables to insure proper clearance. Replace positive battery cable if damaged.

### PROCEDURE

**WARNING:** Always follow all Federal, State, Local and Shop safety standards and use proper safety equipment, and thoroughly read and understand all instructions before performing these procedures.

1. Park the bus on a level surface, apply parking brakes, turn off engine and remove keys. Chock wheels.
2. Open the battery compartment door and inspect the positive battery cable in the battery box for signs of contact with the battery compartment door reinforcement when closed.



Indicates positive cable is contacting compartment door reinforcement

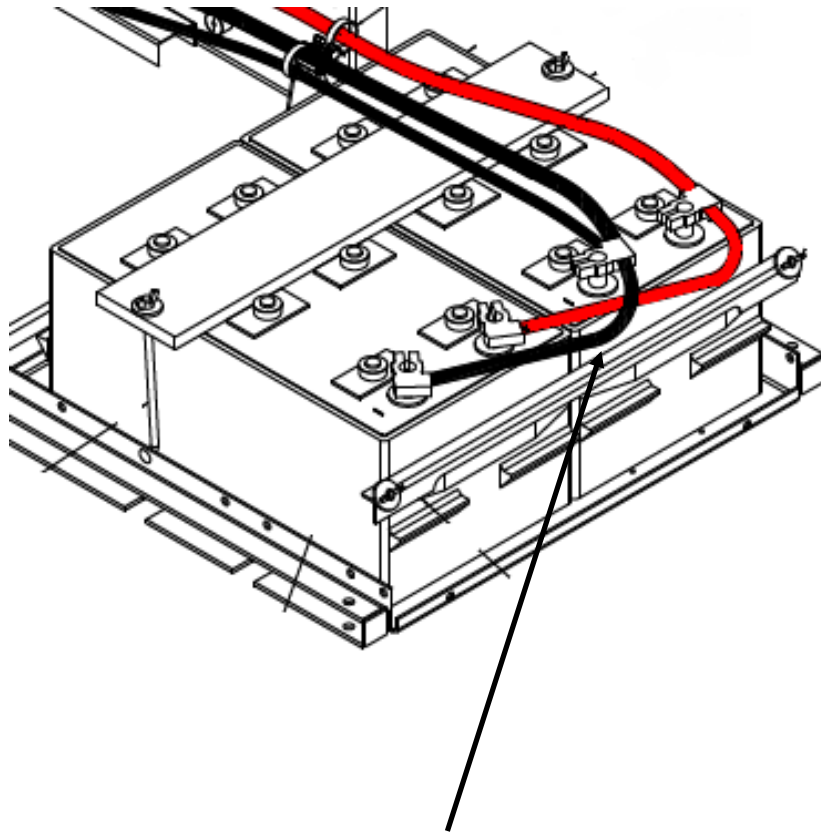




## Battery Cable May Contact Battery Compartment Door Reinforcement

# BULLETIN

3. If contact is observed, Disconnect batteries – Note: when disconnecting the batteries, remove the negative cable first.
4. Inspect the positive cable for damage.
5. If cable insulation has been damaged to the point that stranded wires are exposed, replace the cable and route per the illustration below.
6. If cable insulation damage is minor and no stranded wire is exposed, route the negative cable so that it is over the positive cable per illustration below.



Negative Cable Routed Over Top of Positive Cable

S I 4 X G

S E R V I C E B U L L E T I N